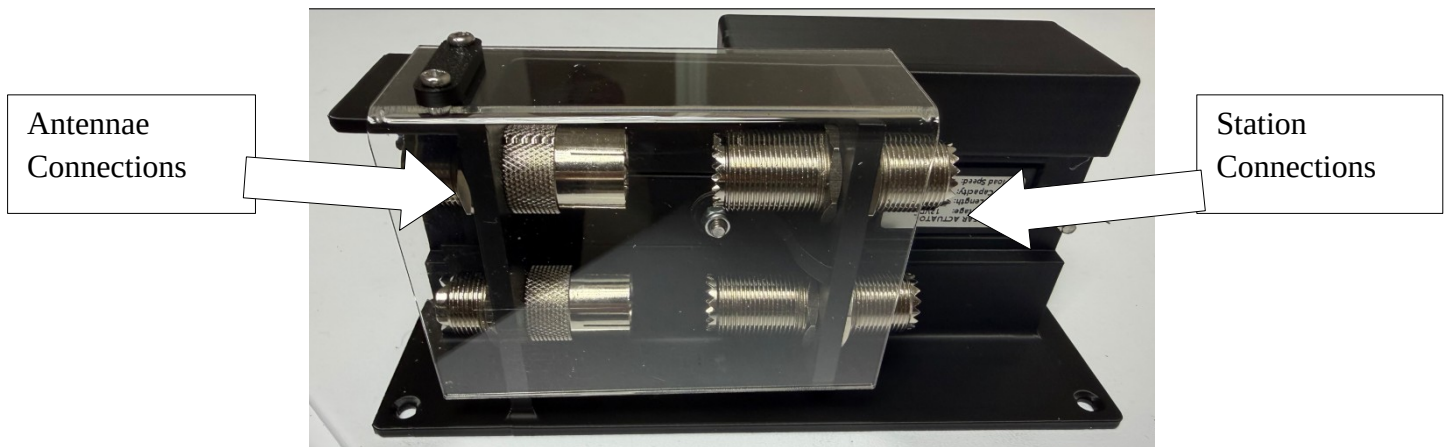
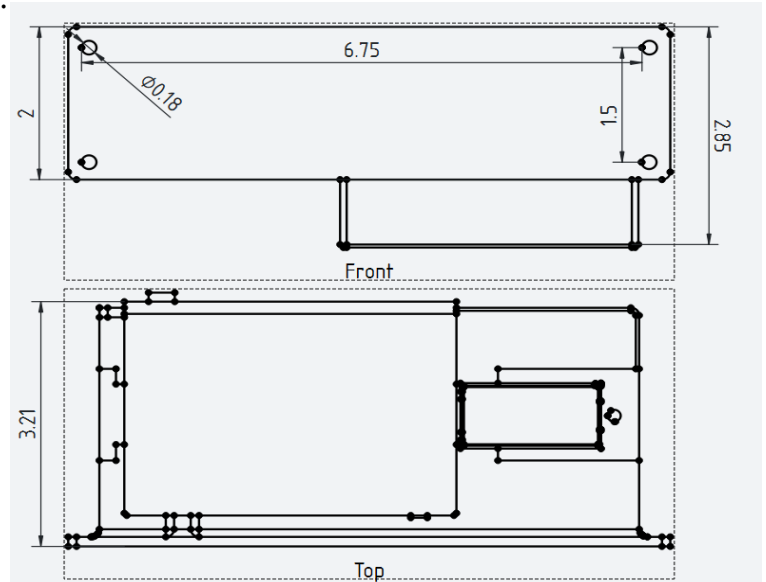


## Automatic Antenna Disconnect (WR9R-AD02)

The WR9R-AD02 Automatic Antenna Disconnect provides a fast and easy way to disconnect your incoming antenna feed-lines from your station. This automated version is hands free, making it great for remote station operation.

### Features:

- SO239/PL259 UHF Connections
- Dual Coaxes
- All Plastic Construction
- 11-14VDC Operation (3A max.)
- Closes when DC is supplied
- Opens when DC is removed
- Includes DC connector "pig-tail"
  - o Red = +12VDC
  - o Black = GND



### Mounting and use considerations:

- **Never power the unit without the cover in place. It can pinch!**
- Remove the cover to attach coaxes.
- Lightly, hand tighten, the cover screws when replacing.
- Orient the disconnect and coaxes to prevent side loading and provide freedom of movement for the station side coaxes.

